

IRRIGATION NEWS



Reminder

Watering the Road

A friendly reminder to watch where your irrigation water goes and keep it off the roads.



Irrigation of water onto the road is not only a waste of water but can also create a safety issue for motorists. The ALIL discharge consent prohibits watering the road. So, incidents could result in enforcement action against the scheme. ADC also has a bylaw prohibiting irrigating the road, which could result in individuals being fined.

Please check that your end guns turn on and off at the correct positions and that movable irrigators are located to avoid watering the road.

Season Update

FEP Audits - Great Results

The Audit results to date for this season have been fantastic, with 80% of shareholders achieving an A.

If your Audit is still to occur, and you want some support to achieve an A, please feel free to contact the Enviro Team. They are here to help.

The INZ Conference



Christchurch, 7-9 April 2020

As a member of ALIL you're a member of Irrigation NZ, so can take up the membership rate for attending the conference.

Season Update

BCI Water

This season ALIL contracted 500l/s of stored water from BCI, to buffer our supply during high demand. This was a successful model, with only 1 day of restriction being experienced by ALIL so far this season.

The day of restriction occurred due to post flood work on the Ashburton River intake which reduced the ALIL supply for a full week in early January.

FEP Updates for 2020

The Irrigo Environmental Team will start contacting you shortly to arrange the FEP updates for 2020.

Those due to be audited this year will require a Nutrient Budget to be prepared, the letter from Irrigo will provide more information.

Refreshed Website

326 Burnett Street, Ashburton 7700 | 03 307 8382 | info@alil.co.nz



Search

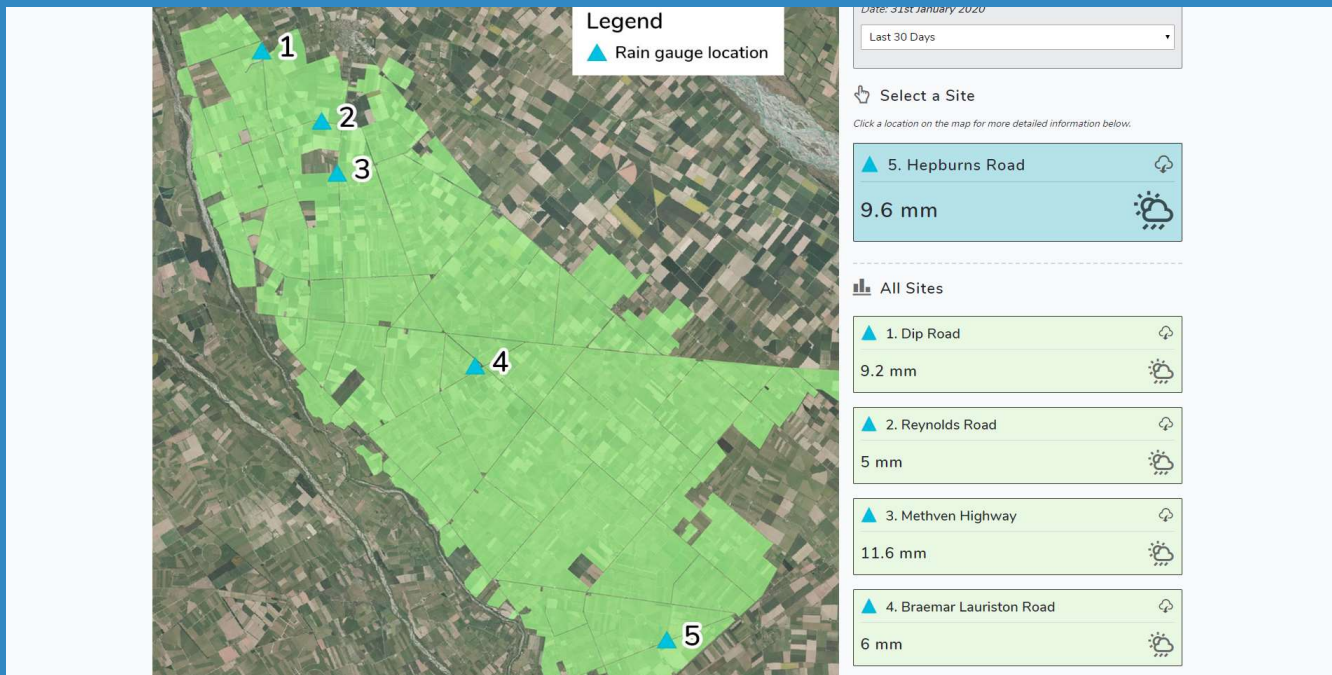
Order Water

- HOME
- OUR STORY
- OUR ENVIRONMENT
- DOCUMENT LIBRARY
- OUR TEAM
- CONTACT US



It was exciting to get our refreshed website up and running earlier in the year. If you haven't had a look yet go to www.alil.co.nz to check it out.

In addition to being able to access the 'order water' page, find information about the scheme, access information resources and gain contact details, the website now displays a 3 day weather forecast and recorded rainfall data from five sites across the scheme. The rainfall sites have been selected based on rainfall bands. The accumulated data for the period selected i.e. 7 days can be displayed on the website, or you can download the data as a CSV file to open in Excel.



Upcoming Training

Water Use

From the start of this 19/20 season we have been following up with shareholders who have been overusing water. We continue to work with shareholders who have been using too much and appreciate their cooperation.



How do I check my water use?

You can check the water use on your offtake using the desktop online Water Order page (not the mobile phone one).

This link

<https://alil.co.nz/images/documents/2018-Ordering-Water-Waterline-Online-Mobile.pdf>

to our website will take you to the water order instructions. Section 3. will talk you through checking your flow rate.

Stock water

Stock water

Information regarding stock water supply from the scheme has been sent out with this newsletter.

The supply of stock water is being run in conjunction with ADC as a trial. We need to be able to collect information about the stock water use in order to establish a permanent arrangement with the Council.

Those interested in signing up for stock water are asked to read over the scheme requirements in the stock water policy, review and sign the stock water agreement and return it by email to info@alil.co.nz. These agreements will need to be returned promptly to ensure delivery of stock water after the end of the irrigation season.

Survey

Please click this link to fill in our annual survey. Your feedback helps us ensure we are delivering what you want us to.

<https://www.surveymonkey.com/r/D9Z7G3Z>

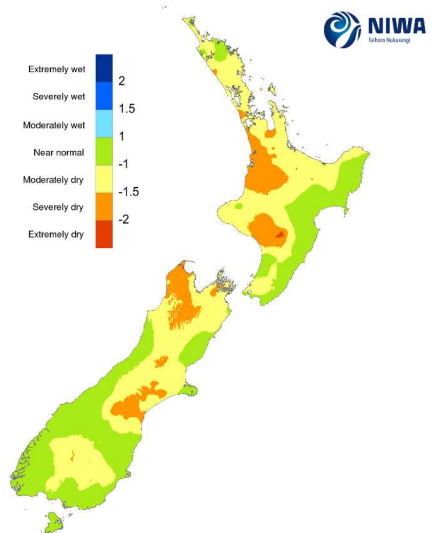
Like last year we will again answer any queries raised through the survey in future newsletters.

NIWA Data

30 Day SPI

The Standardised Precipitation Index (SPI) is a simple measure of drought (and also of very wet conditions) and is based solely on the accumulated precipitation for a given time period (e.g. over the last 30 or 60 days), compared with the long-term average precipitation for that period. This precipitation difference (or anomaly) is "standardised" by dividing by the long-term standard deviation of precipitation for that period.

SPI for 9am 31/12/2019 to 9am 30/01/2020



Much of our scheme area was classified as being severely dry at the end of December. For more information see

https://niwa.co.nz/static/climate/smd_map.png?1234

Message from the Ops Team

There is only seven weeks to go in the irrigation season. At the end of the season the team will start winter maintenance. Call the duty phone 027 367 2545 if you need assistance. Mike, Rachel, Luke and Brett.